

Omni Institute Report

Colorado Opioid Abatement Region 4 Council: Transportation RFP Evaluation Quarterly Report

Year 2 Quarter 2 (Jan – Mar 2025)



Centennial Mental Health

Grant Overview

Centennial Mental Health Center (CMHC) received funding to expand existing secure transportation services to include demand response services to transport individuals seeking *voluntary admission* into substance use disorder in-patient services, such as:

- Residential Treatment
- Detoxification And Withdrawal Management
- Outpatient Substance Use Services
- MAT Services
- Individual Outpatient Therapy
- Outpatient Groups
- Relapse Prevention

Year 2 Quarter 2 Grant Accomplishments

Transportation Services Launched October 2023



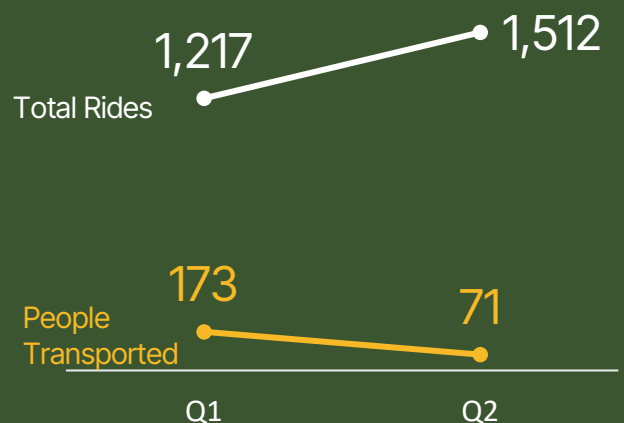
1,512 RIDES



71 PEOPLE
TRANSPORTED



42,931 TOTAL
MILES DRIVEN



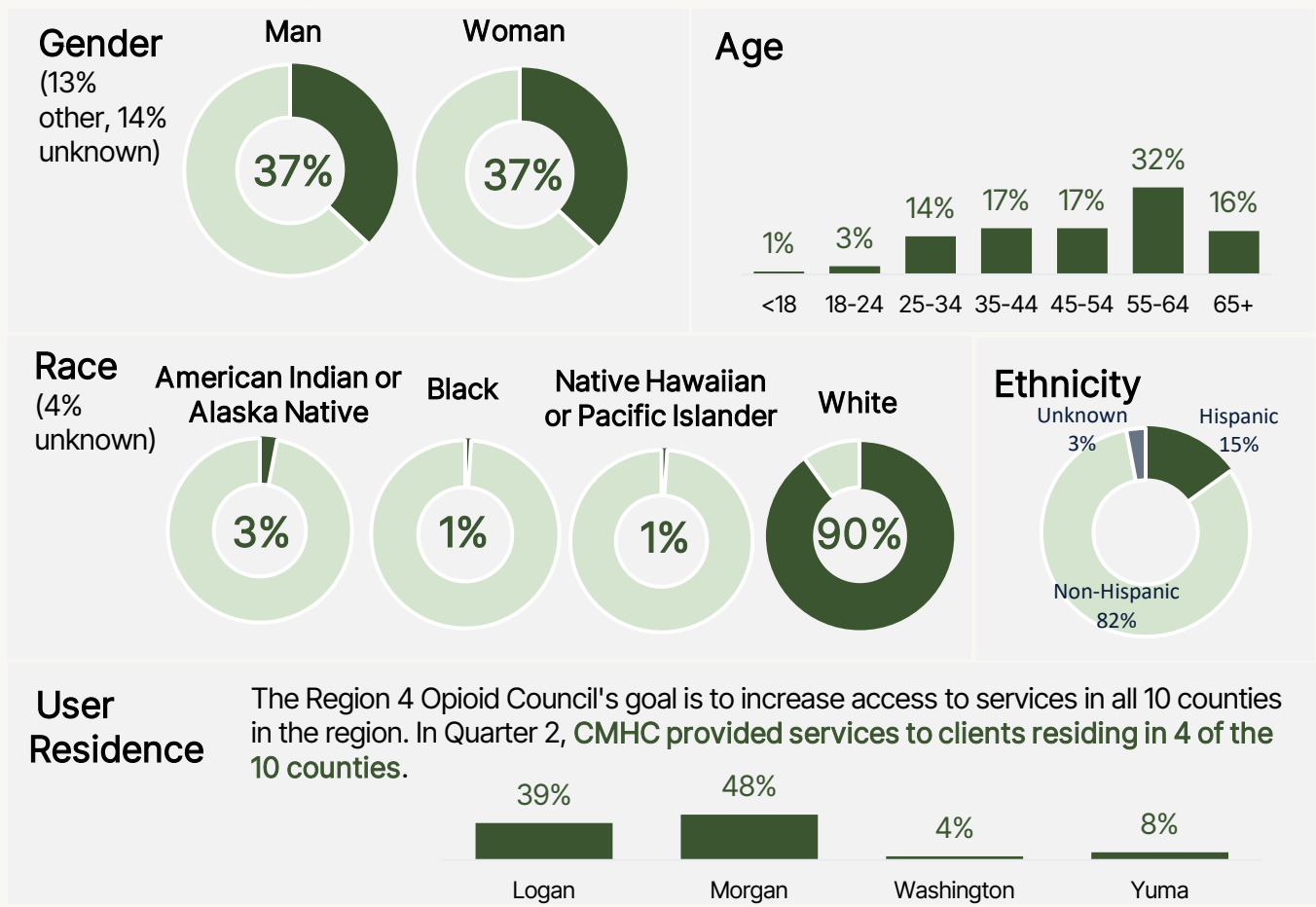
Services Provided

In Year 2 Quarter 2, 748 total services were provided by CMHC. Below are the top RFP-funded SUD services CMHC provided in Year 2 Quarter 2 and the unique individuals receiving each service. Other services provided include Community Support Programs for SUD, DUI Services, Mobile Crisis SUD, Telehealth, and Sober Living SUD. These services had fewer than 10 individuals served and exact numbers are suppressed to protect client identities.



Who was Served

71 clients were served in Quarter 2. Below are the demographics of those clients. Gender was split evenly between those who identified as a man and those who identified as a woman. The vast majority of clients were White and Non-Hispanic. Nearly half of clients were 55 years old or older.



North Colorado Health Alliance

Grant Overview

North Colorado Health Alliance (NCHA) received funding to provide transportation services to patients seeking treatment and recovery services for a substance use disorder. The funding aligns the regional efforts of NCHA and Advocates for Recovery Colorado (AFRC) to bridge services across the continuum of care within the Region 4 area through:

- Improved Access to Transportation
- Care Coordination
- Overdose Prevention
- Peer Recovery
- Support Services
- Treatment Support

Year 2 Quarter 2 Grant Accomplishments

Transportation Services Launched October 2023



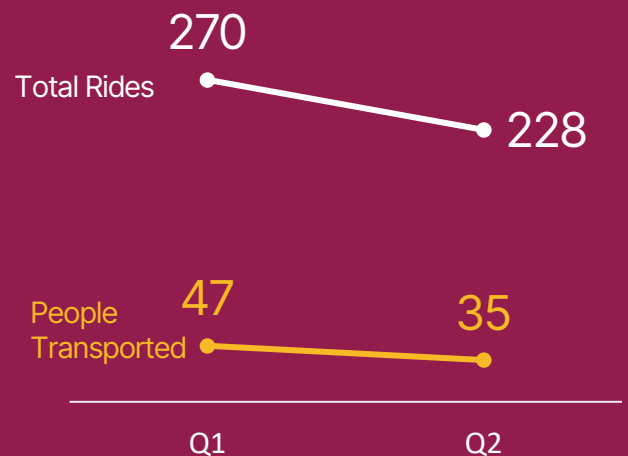
228 RIDES



35 PEOPLE
TRANSPORTED



7,338 TOTAL
MILES DRIVEN



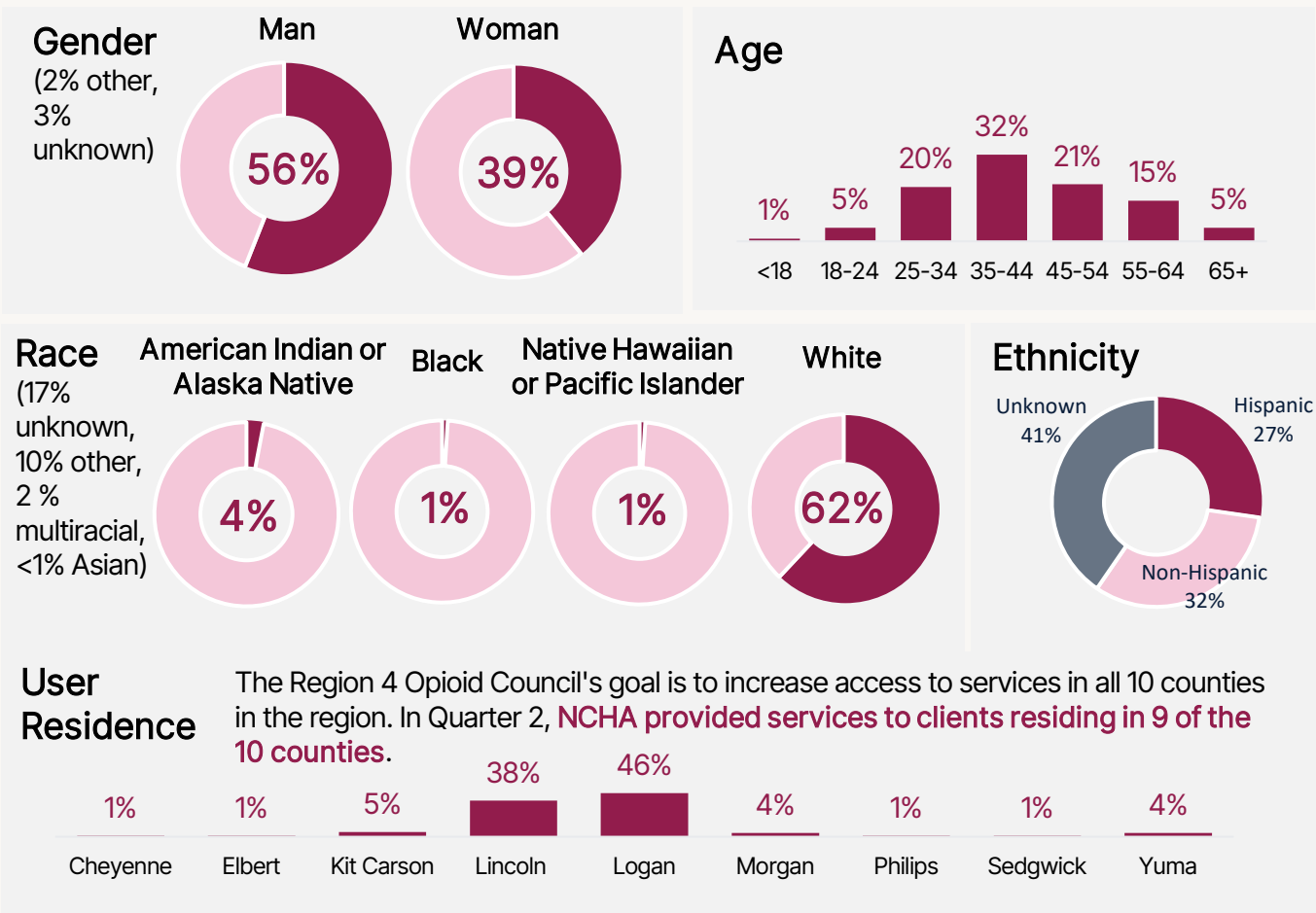
Services Provided

In Year 2 Quarter 2, NCHA and AFRC provided 1,084 total services. Below are the top RFP-funded SUD services provided in Year 2 Quarter 2 and the unique individuals receiving each service if that information was available. Other provided services include behavioral health connectivity, community resource navigation, justice system support, food security, housing/recovery housing, MAT connectivity, treatment connection and collaboration.



Who was Served

168 clients were served in Quarter 2. Below are the demographics of those clients. The majority of clients identified as men. The vast majority of clients were White and Non-Hispanic. Nearly half of clients were 55 years old or older.



Client and Provider Feedback

Through the first year of funding from Region 4, CMHC, NCHA, and AFRC have created vital services for their community and their clients appreciate their work. Transportation services have allowed individuals to attend their appointments and meetings, leading to sustained sobriety and improved relationships. Clients report their connections with staff have been lifesaving.

Success Stories

Clients and providers tout the importance of these transportation services. Without these services, clients are less likely to attend their appointments, which could result in legal consequences.

Without these Transportation Services...

"I would have a warrant for arrest because I wouldn't make it to my appointments." – NCHA Client

"[I would] take the bus, but it doesn't come frequently so would have to walk a long distance and in the cold" – NCHA Client

"They thanked our driver for helping them get to their appointment and groups, those help them out so much, and they don't know where they would end up without being able to attend those." – NCHA Provider

Door-to-Door Support

"I have a client that has to walk across town to get to a bus stop that has been using the transportation program." –CMHC Provider

"It definitely helps when clients have appointments in the evening after the bus stops service. Some clients don't want to use Telehealth, so they come into the office. – CMHC Provider

"The customer service [sic] and the door-to-door support. The bus doesn't come close to where I live." – NCHA Client

"It is amazing and I am very glad to have the support." – NCHA Client



Organizational Success

NCHA shared the following organizational successes:

Between January and March, NCHA has worked to expand outreach efforts across the region. As a result, we have made significant strides in building strong partnerships across multiple counties, with a focus on supporting individuals impacted by substance use disorder (SUD). We have conducted outreach to several law enforcement agencies, including police and sheriff departments in Yuma County, Kit Carson County, Washington County, and Logan County. These efforts have been well received, with departments expressing interest in our services and mission.

Probation Department Partnerships

NCHA has been introduced to the Morgan and Logan County Probation Departments and was invited to present at their all-staff meetings. These relationships have resulted in regular referrals and transportation requests for clients to IRT and Advantage Treatment Center, reflecting a strong level of trust and collaboration.

Advantage Treatment Center (ATC) Partnership

Our growing relationship with ATC in Sterling has led to new opportunities to support their clients. We currently assist in transporting individuals to MAT (Medication-Assisted Treatment) services, allowing us to form deeper connections. As a result, ATC now refers clients to NCHA for peer support as an approved method of treatment. Discussions are underway to have NCHA peer coaches and care coordinators onsite a few hours each week to work directly with clients, further strengthening our impact.

Community Resource Centers

NCHA has also established collaborative relationships with the Community Resource Centers in Yuma, Akron, Fort Morgan, and Sterling. These centers agree that the services offered by NCHA can greatly benefit the individuals they encounter. The Director of the Rural Community Resource Centers in Yuma and Akron has expressed full support.

Housing Resources

Our meeting with the Fort Morgan Housing Resource Center reaffirmed a strong local demand for peer recovery coaches and care coordination support. The center has pledged to utilize our services and highlighted the critical need for peer support in Morgan County. In line with these efforts, we also distributed Narcan to the Morgan County Warming Shelter.



Sterling Housing Authority Collaboration: We have formed a close partnership with the Sterling Housing Authority, conducting coffee outreach events onsite. This has allowed us to directly engage with residents dealing with SUD, and we are planning continued, structured events in collaboration with the housing authority moving forward.

